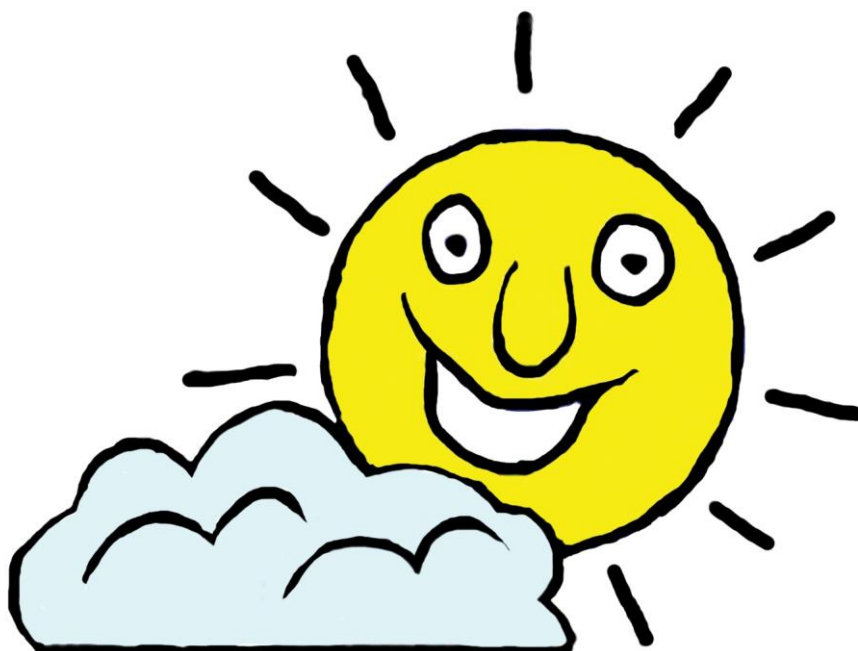


Portesbery School Accessibility Plan



Portesbery School

A happy school where every one matters
and every voice is heard

Approved by:

Chris Hamilton, chair
of governors

Date: 25th May 2023

Last reviewed on:

25th May 2023

Next review due by:

May 2026

Contents

1. Aims	2
2. Legislation and guidance	2
3. Action plan	3
4. Monitoring arrangements.....	5
5. Links with other policies.....	5

1. Aims

Schools are required under the Equality Act 2010 to have an accessibility plan. The purpose of the plan is to:

- Increase the extent to which pupils with disabilities can participate in the curriculum
- Improve the physical environment of the school to enable pupils with disabilities to take better advantage of education, benefits, facilities and services provided
- Improve the availability of accessible information to pupils with disabilities

Our school aims to treat all its pupils fairly and with respect. This involves providing access and opportunities for all pupils without discrimination of any kind.

The plan will be made available online on the school website, and paper copies are available upon request.

Our school is also committed to ensuring staff are trained in equality issues with reference to the Equality Act 2010, including understanding disability issues.

The school supports any available partnerships to develop and implement the plan.

Our school's complaints procedure covers the accessibility plan. If you have any concerns relating to accessibility in school, the complaints procedure sets out the process for raising these concerns.

We are a purpose built special school, built in 2015, and as such ensured that all areas of our school and grounds are accessible to all levels of disabilities.

2. Legislation and guidance

This document meets the requirements of [schedule 10 of the Equality Act 2010](#) and the Department for Education (DfE) [guidance for schools on the Equality Act 2010](#).

The Equality Act 2010 defines an individual as disabled if they have a physical or mental impairment that has a 'substantial' and 'long-term' adverse effect on their ability to undertake normal day to day activities.

Under the [Special Educational Needs and Disability \(SEND\) Code of Practice](#), 'long-term' is defined as 'a year or more' and 'substantial' is defined as 'more than minor or trivial'. The definition includes sensory impairments, such as those affecting sight or hearing, and long-term health conditions such as asthma, diabetes, epilepsy and cancer.

Schools are required to make 'reasonable adjustments' for pupils with disabilities under the Equality Act 2010, to alleviate any substantial disadvantage that a pupil with disabilities faces in comparison with a pupil without disabilities. This can include, for example, the provision of an auxiliary aid or adjustments to premises.

3. Action plan

This action plan sets out the aims of our accessibility plan in accordance with the Equality Act 2010.

AIM	CURRENT PRACTICE	GOOD PRACTICE	OBJECTIVES	ACTIONS TO BE TAKEN	PERSON RESPONSIBLE	DATE TO COMPLETE ACTIONS BY	SUCCESS CRITERIA
Increase access to the curriculum for pupils with a disability	<ul style="list-style-type: none"> Our school offers a differentiated curriculum for all pupils We use resources tailored to the needs of pupils who require support to access the curriculum Curriculum resources include examples of people with disabilities Curriculum progress is tracked for all pupils, including those with a disability Targets are set effectively and are appropriate for pupils with additional needs The curriculum is reviewed to make sure it meets the needs of all pupils 			<p>Under review – new curriculum introduced in 21/22</p> <p>All our students have disabilities</p> <p>Introduction of Earwig to monitor progress in 22/23 – embedding continues across whole school. Regular review.</p>			

AIM	CURRENT GOOD PRACTICE	OBJECTIVES	ACTIONS TO BE TAKEN	PERSON RESPONSIBLE	DATE TO COMPLETE ACTIONS BY	SUCCESS CRITERIA
Improve and maintain access to the physical environment	<p>The environment is adapted to the needs of pupils as required. This includes:</p> <ul style="list-style-type: none"> • Ramps • Elevators • Corridor width • Disabled parking bays • Disabled toilets and changing facilities • Inclusive resources and facilities at wheelchair-accessible height 		To ensure that the same level of accessibility is included in future expansion plans.			
Improve the delivery of information to pupils with a disability	<p>Our school uses a range of communication methods to make sure information is accessible. This includes:</p> <ul style="list-style-type: none"> • Internal signage • Large print resources • Induction loops • Pictorial or symbolic representations / exchange • Adaptive/assistive technology 		Regular training for staff in Makaton, PECS, use of switches, eyegaze and all other communication technologies used by our students.			

4. Monitoring arrangements

This document will be reviewed every 3 years, but may be reviewed and updated more frequently if necessary. It will be reviewed by senior leadership team.

It will be approved by the governing board.

5. Links with other policies

This accessibility plan is linked to the following policies and documents:

- Risk assessment policy
- Health and safety policy
- Equality information and objectives (public sector equality duty) statement for publication
- Special educational needs (SEN) information report
- Supporting pupils with medical conditions policy